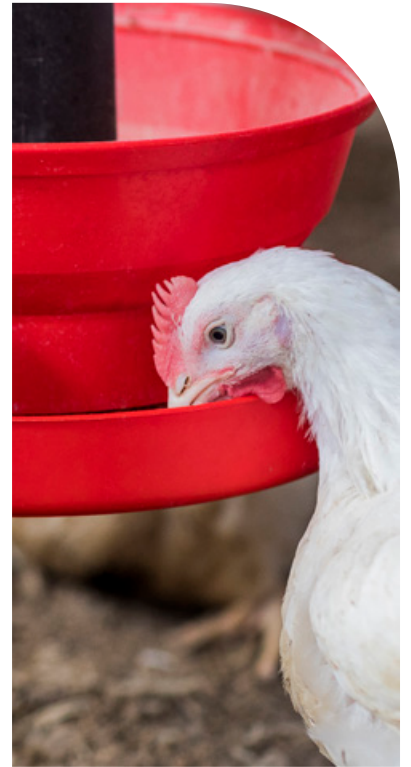




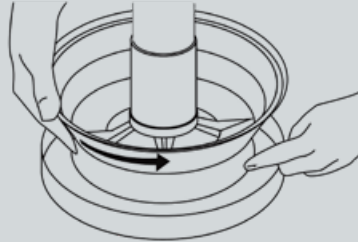
MULTIBECK[®]

USING WITH BROILERS

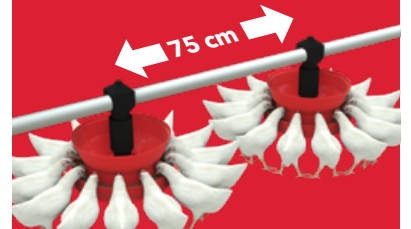


BEFORE CHICKS ARRIVE

- ▶ To set the feed level : turn the upper pan 3/4 to 1 turn from lower pan
- ▶ Turn on the feed line
- ▶ Distribute the feed by slightly shaking the feeder

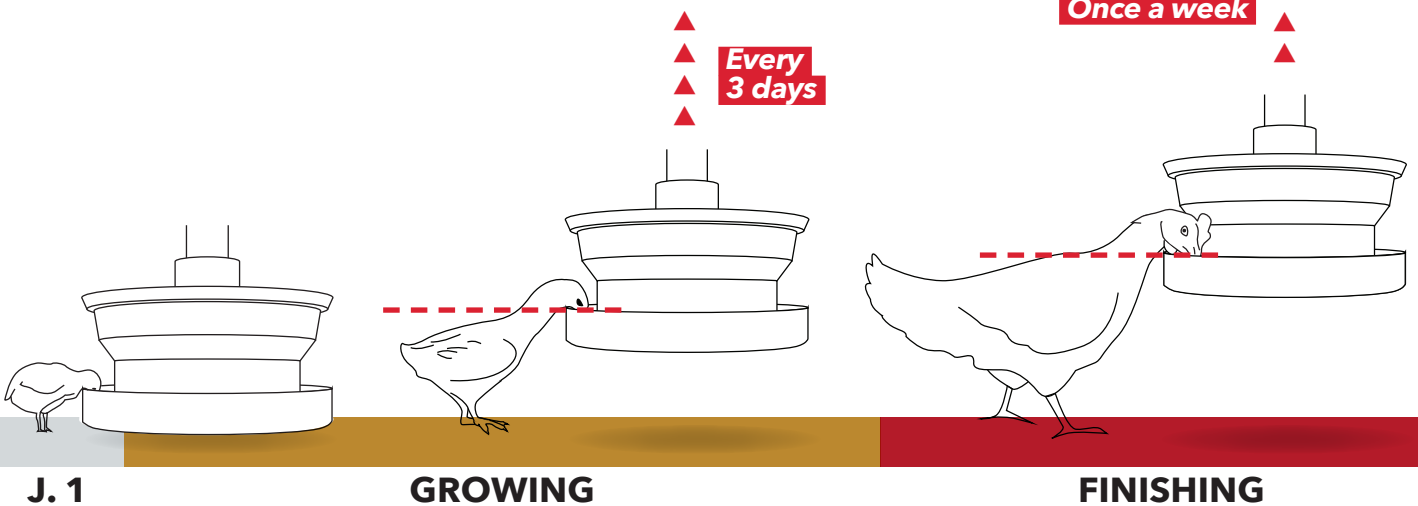


OPTIMAL ACCESS TO THE FEED



BROILER'S BACK = LEVEL WITH LOWER PAN EDGE

- ▶ The neck of the bird should be slightly outstretched when



J. 1

GROWING

FINISHING